

NEWS RELEASE

October 5, 2021

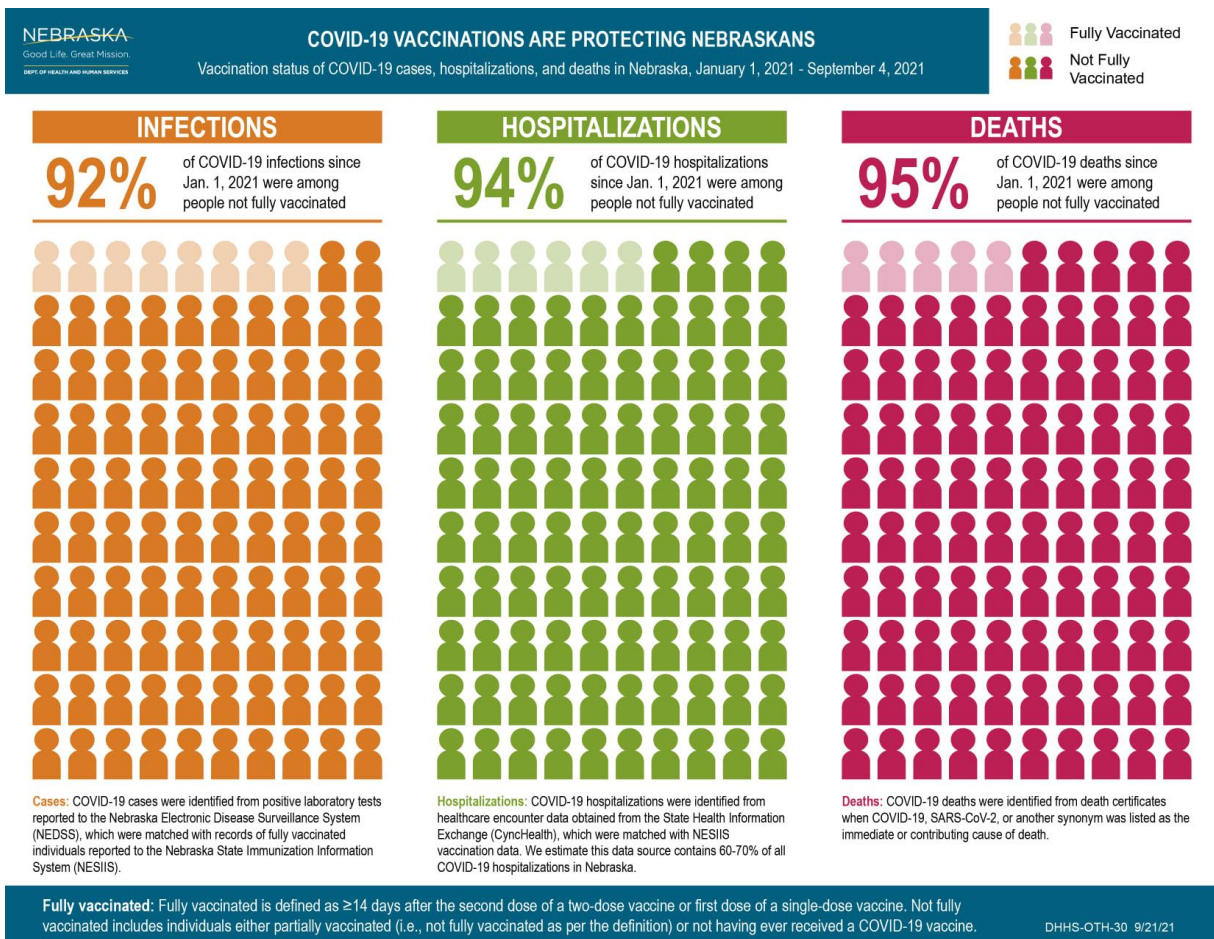
FOR IMMEDIATE RELEASE

Contact: Myra Stoney, Health Director, [director@swhealth.ne.gov](mailto:director@swhealth.ne.gov), 308-345-4223

**COVID-19 Hospitalization Rates in Nebraska**

Southwest Nebraska Public Health Department (SWNPHD) has been receiving questions from the public regarding the effectiveness of the COVID-19 vaccines, including whether they work against the variant strains such as Delta. Within the nine-county health district the majority of hospitalizations due to COVID-19 have been in unvaccinated individuals. It is very rare that a fully vaccinated individual gets hospitalized for serious illness due to COVID-19 in southwest Nebraska.

Nebraska is fortunate to have experts available in public health and biosafety at the University of Nebraska Medical Center, Nebraska Medicine, and other facilities across the state. They along with Nebraska Department of Health and Human Services (DHHS) have provided easy to understand explanations of both local COVID-19 data and worldwide trends. Nebraska’s state epidemiologist Dr. Matt Donohue recently released the following graphic about the rates of infection, hospitalization and death in Nebraska due to COVID-19.



This data was reported by many healthcare professionals from all across the state and was carefully reviewed before publication. SWNPHD encourages residents to seek out reliable sources such as this and to put their confidence in the integrity and professionalism of their fellow Nebraskans.

Pfizer, Moderna, and the one-dose J&J COVID vaccines are available at several locations throughout the health district including at SWNPHD, local pharmacies and participating providers. All three COVID-19 vaccines currently approved for use in the United States have proven to be effective at preventing serious illness, hospitalization, and death.

SWNPHD had 104 new cases of COVID-19 reported from September 28 to October 4, 2021, bringing the weekly average to 93 cases per week in the last 30 days. A breakdown by age includes: 0 to 19 – 33; 20 to 29 – 5; 30 to 39 – 16; 40 to 49 – 14; 50 to 59 – 9; 60 to 69 – 17; 70 to 79 – 8; 80 and over – 2. The total number of cases is 4,697. Vaccination rates across the health district have reached 50%, counting both fully vaccinated and partially vaccinated individuals.

Visit [swhealth.ne.gov](http://swhealth.ne.gov) for information on COVID-19, including the state dashboard of cases by county. You can also follow SWNPHD on Facebook, Twitter, and Instagram. SWNPHD serves Chase, Dundy, Frontier, Furnas, Hayes, Hitchcock, Keith, Perkins, and Red Willow counties. SWNPHD is located at 404 West 10th St (1 block north of Arby's) in McCook and can be reached by calling 308-345-4223.

###